

2021/2022

REPORT TO THE COMMUNITY



Wheatland Crisis Society

WCS 2021/2022

resilience *adjective*

"an ability to recover from
or adjust easily to
misfortune or change"

COVID-19 exacerbated a shadow pandemic of domestic abuse and the number of individuals in crisis.

Like many other services, WCS has been under unprecedented amounts of various challenges to stay open and remain a safe harbour for those who sought out the shelter for safety and relief from unrelenting abuse. Thanks to community support and all the amazing staff at WCS, we are proud to say we have persevered through and in our 2021/2022 fiscal year we helped 176 people interrupt the cycle of abuse.

This pandemic has reminded us of how interdependent we are and just how much we value and appreciate our community support. As we move forward with determination and re-imagine what our society could and should be, WCS is committed to providing innovative programs to assist everyone experiencing domestic violence. While we continue to prioritize the health and safety of our clients, we are excited to cultivate new relationships and partnerships with all the communities around us to further our reach and help all those in crisis. We look forward to connecting with you at community events and learning about your stories of resilience and how we can expand our reach to better assist those in their journey.

You will find multiple client quotes in this years Report To The Community to show examples of our impact.

Thank you for your continued support, and we look forward to working with you in 2022/2023.

The WCS Board of Directors & Staff



WCS 2021/2022

Our Mission (What We Do)

Together we walk the path with those in crisis, honouring the past, providing support in the present and awakening hope for the future.

Our Vision (What We Strive to Be)

Interrupting the cycle of abuse through empowerment to create a safe environment for all.

Our Values (How We Conduct Ourselves)

Compassion: We are kind and caring to everyone we encounter

Respect: We value everyone and treat people with dignity and equity

Integrity: We are truthful and honest in all areas. We do the right thing, even if it is hard.

Trust: We will be honest, sincere, and transparent

Empowering: We recognize strengths and help others to act.

Safety: We provide protection and security; physical and emotional to those we serve.



WHO WE SERVE



WE ARE ONE OF THE FEW SHELTERS THAT WELCOME ALL INDIVIDUALS EXPERIENCING ABUSE REGARDLESS OF GENDER IDENTITY OR GENDER EXPRESSION. THIS INCLUDES, BUT IS NOT LIMITED TO, INDIVIDUALS WHO IDENTIFY AS MALE, GENDER FLUID, NON-BINARY OR FEMALE.

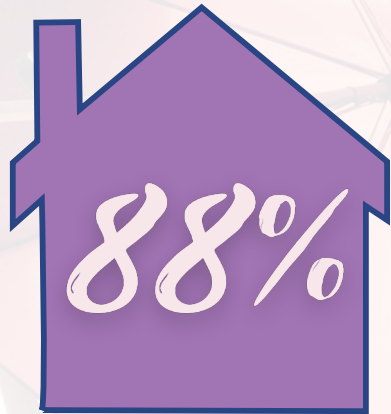
The WCS Emergency Shelter Program is available to those fleeing abuse regardless of their geographic location

WCS Outreach & Public Education Programs serve over **20** communities!

Strathmore, Gleichen, Siksika, Cluny, Rockyford, Standard, Rosebud, Drumheller, Three Hills, Acme, Carbon, Linden, Beiseker, Irricana, Kathryn, Chestermere, Langdon, Indus, Carseland, Arrowood, Mossleigh



OUR IMPACT 2021/2022



**OF THOSE ACCESSING
THE SHELTER WERE FIRST
TIME USERS**

1966 CALLS TO
OUR CRISIS
LINE

*These calls resulted in 30,099
minutes spent by Crisis
Intervention Workers providing
direct services*

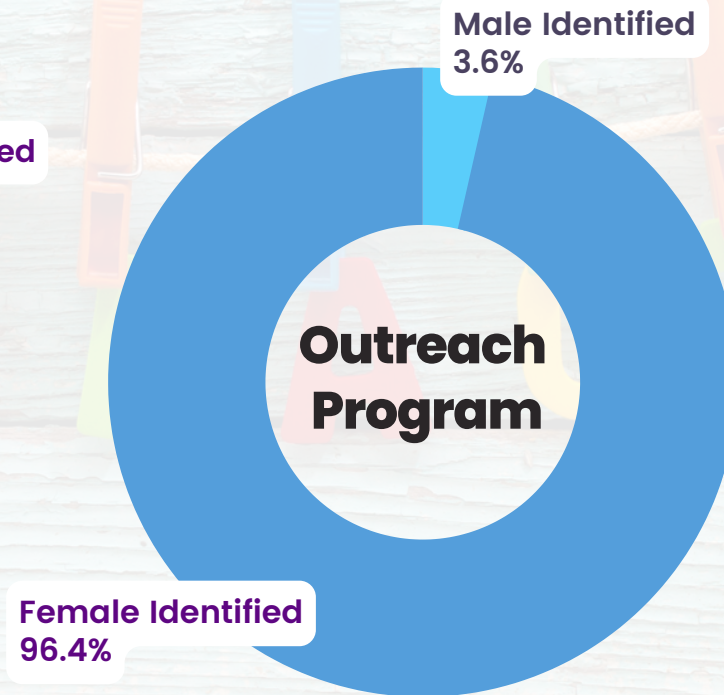
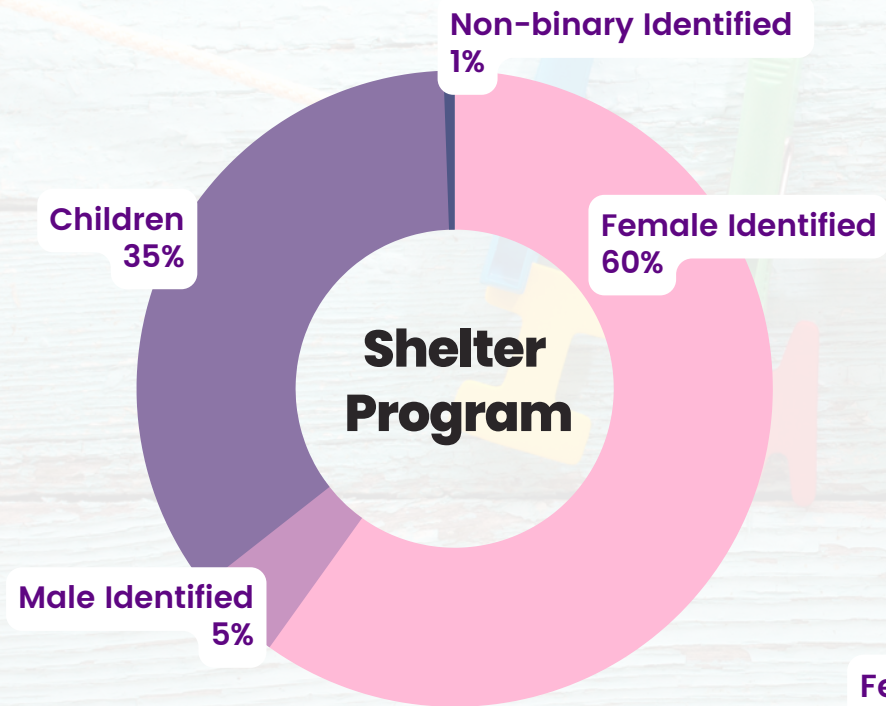
“ WCS has given me a chance to breathe, and that breath is finally fresh air. ”



2021/2022 OUR IMPACT

COMMUNITY MEMBERS WHO COURAGEOUSLY SOUGHT SUPPORT

During 2021/2022
we've helped
176 PEOPLE
interrupt the cycle of
Domestic Violence



2021/2022 OUR IMPACT – 3 YEAR OVERVIEW



2021/2022 CHILDRENS PROGRAMS

1601

Hours of direct Child &
Youth programming
provided

984

Visits to the Child &
Youth Program

— “ —

My time here was (overwhelming and humbling) and without this type of support I'm almost sure I would have been in a bad situation.....

So, thank you very much.

People like you, helping people in need as I needed it, and helped me understand that not all times are good and that asking for help isn't weak, it's a must sometimes.

— ” —



2021/2022 PANDEMIC RESPONSE

During the 2020-2021 COVID-19 Pandemic, the team at WCS continued to remain dedicated to helping all people experiencing abuse. During the public health regulations in 2021, the capacity for The Wheatland Crisis Society was temporarily reduced to 50%.

March 7, 2022 The Alberta public health regulations were lifted, and our programs returned to full capacity.

The team at WCS is excited to get back to regular programming, where we can now offer our clients daily house meetings, groups, community lunch, yoga and much more.

What this means to us is we can continue to provide the services that are important to the community we serve while still keeping our clients and staff safe.

WCS would like to thank all staff for their flexibility as restrictions frequently changed throughout the pandemic.



WE ARE COMMITTED TO KEEPING EVERYONE SAFE BY ;

- Ensured testing is available on and offsite
- Routine daily sanitation procedures on all high-touch surfaces
- Masks and PPE are still provided to all clients and staff as requested
- Continue the use of washable toys
- Met & Exceeded all of AHS public health requirements

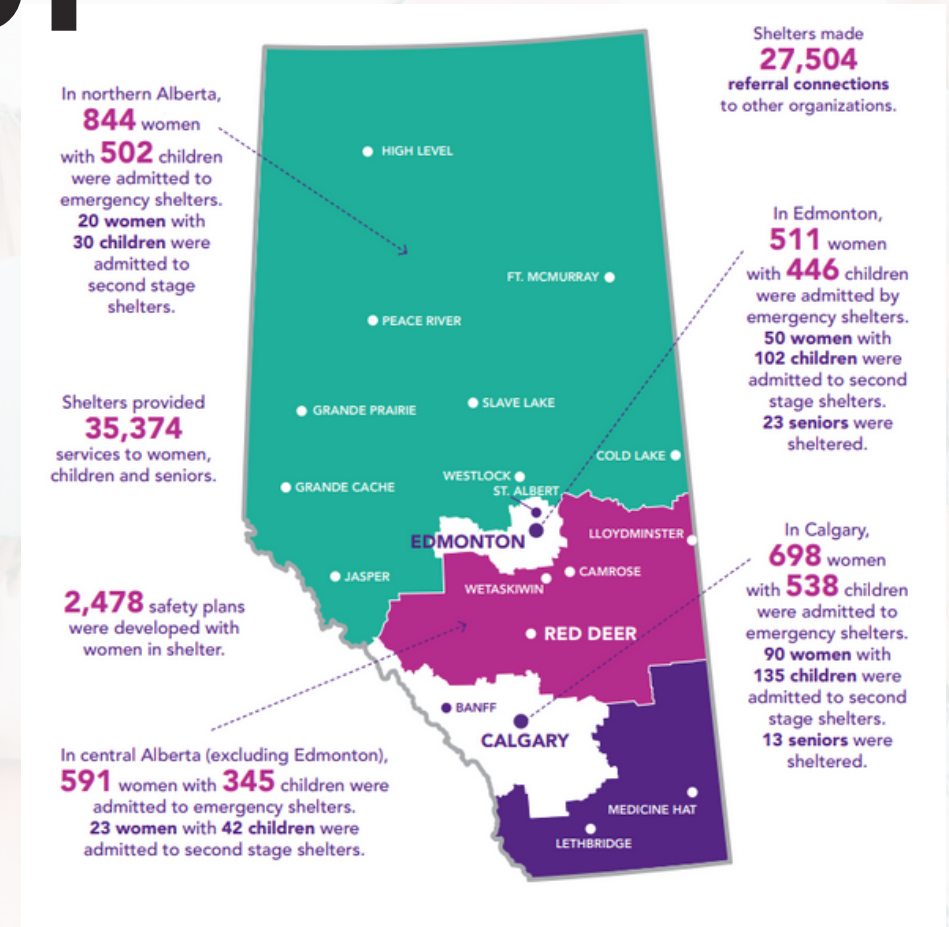


2021/2022 PROVINCIAL IMPACT

In 2021/2022 shelters have persevered during the pandemic.

These essential services did not close. Shelters have been striving to meet and exceed the public health guidelines, remaining open even as many other services and businesses were shuttered during the pandemic.

Despite the challenges COVID-19 posed for domestic violence shelters across the province, shelters remained open and continued to support communities. In 2020/21:



2021/2022 WHAT WE DO

WHAT OUR COMMUNITY MEMBERS WE HAVE SUPPORTED HAVE TO SAY

“

*I was able to take care
of myself properly here;
self-care*

“

**I am strong now,
No one will ever
hurt me again.**

”

“

I know that you have
helped set me free
I'll take you with me every
step of the way
You will be with me every day
I'll always have a place to belong
I will never face anything alone
because you will be cheering
me on from back home.

”

